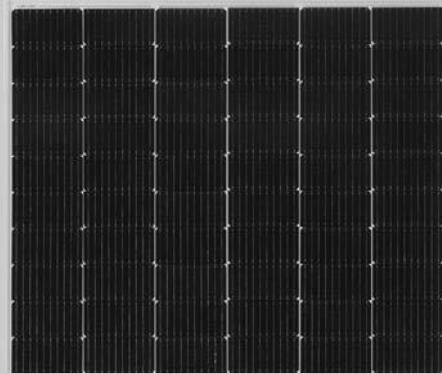


TR 60M 440 Watt Mono-facial

Tiling Ribbon (TR) Technology

TIGER Pro



KEY FEATURES



TR technology + Half Cell

TR technology with Half cell aims to eliminate the cell gap to increase module efficiency (mono-facial up to 20.77%)



MBB instead of 5BB

MBB technology decreases the distance between bus bars and finger grid line which is benefit to power increase.



Higher lifetime Power Yield

2.0% first year degradation,
0.55% linear degradation



Best Warranty

12 year product warranty,
25 year linear power warranty



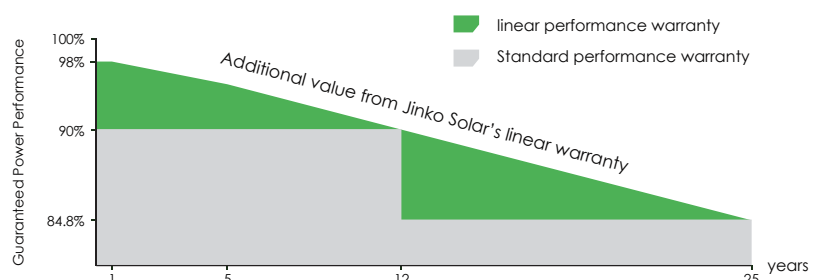
Strengthened Mechanical Support

5400 Pa snow load, 2400 Pa wind load



LINEAR PERFORMANCE WARRANTY

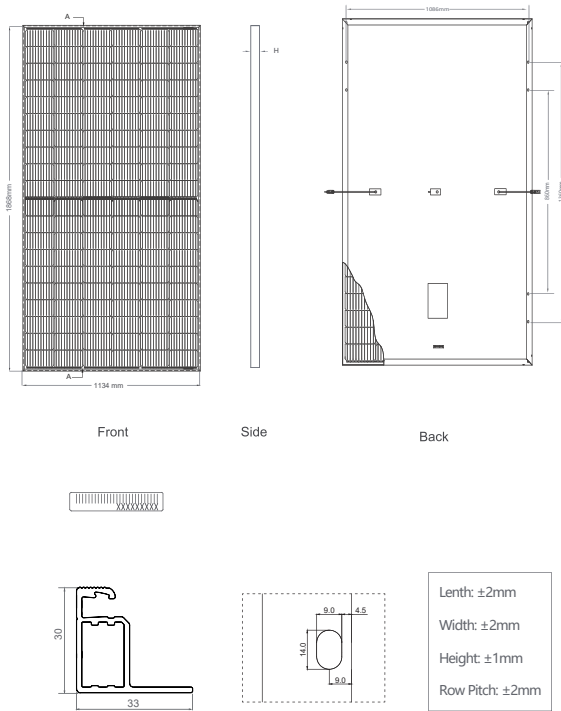
12 Year Product Warranty • 25 Year Linear Power Warranty
0.55% Annual Degradation Over 25 years



ISO9001:2015, ISO14001:2015, ISO45001:2018 certified factory

IEC61215, IEC61730 certified product

Engineering Drawings

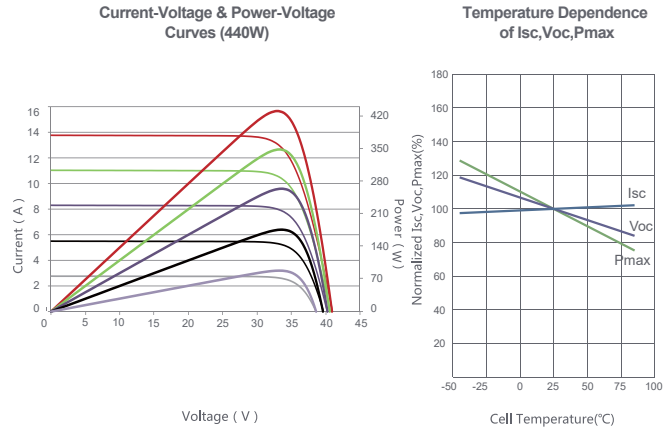


Packaging Configuration

(Two pallets = One stack)

35pcs/pallets, 70pcs/stack, 840pcs/ 40'HQ Container

Electrical Performance & Temperature Dependence



Mechanical Characteristics

Cell Type	P type Mono-crystalline
No. of cells	120 (2×60)
Dimensions	1868×1134×30mm (73.54×44.65×1.18 inch)
Weight	23.8 kg (52.47 lbs)
Front Glass	3.2mm, Anti-Reflection Coating, High Transmission, Low Iron, Tempered Glass
Frame	Anodized Aluminium Alloy
Junction Box	IP68 Rated
Output Cables	TUV 1×4.0mm ² (+): 290mm, (-): 145 mm or Customized Length

SPECIFICATIONS

Module Type	JKM440M-6TL4	
	STC	NOCT
Maximum Power (Pmax)	440Wp	327Wp
Maximum Power Voltage (Vmp)	33.72V	31.39V
Maximum Power Current (Imp)	13.05A	10.43A
Open-circuit Voltage (Voc)	41.02V	38.72V
Short-circuit Current (Isc)	13.73A	11.09A
Module Efficiency STC (%)	20.77%	
Operating Temperature(°C)	-40°C~+85°C	
Maximum system voltage	1000VDC (IEC)	
Maximum series fuse rating	25A	
Power measurement tolerance	-3%~+3%	
Temperature coefficients of Pmax	-0.35%/°C	
Temperature coefficients of Voc	-0.28%/°C	
Temperature coefficients of Isc	0.048%/°C	
Nominal operating cell temperature (NOCT)	45±2°C	

* STC: ☀️ Irradiance 1000W/m² 📏 Cell Temperature 25°C

☁️ AM=1.5

NOCT: ☀️ Irradiance 800W/m² 📏 Ambient Temperature 20°C

☁️ AM=1.5

🌀 Wind Speed 1m/s